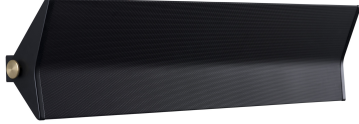


Pierre Guariche

G3T BK DIMC
Wall lamp



Description

- G3 Triple Tilting wall lamp
- Finish: BLACK
- Micro-perforated painted steel deflector
- Painted steel wall housing and brass adjusters



Light specifications and controlling

- Lamp: Integrated 2700K LED module
- Dimming by traditional switch or smartphone

Installation and maintenance

- Dimensions : 930 x 200 x 120 mm
- Connection to 3G1.5 terminal block



Characteristics

- Operating temperature: -20°C to +30°C
- Electrical class: Class I
- Power supply: 220-240 V 50/60 Hz
- Power consumption: 28 W
- Weight: 4,2 kg