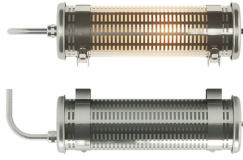


GUDE 100

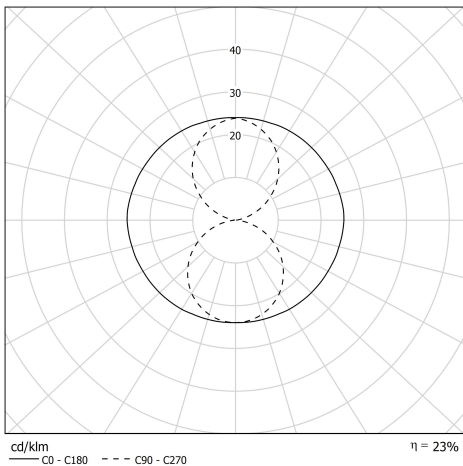
360°

80300005
GUDE 100 360° COAL COAL 350 CL1
Tubular wall light



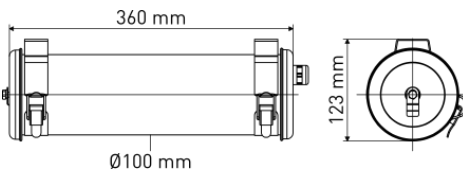
Description

- Tubular wall light GUDE 100 360° (design: Dominique Perrault & Gaëlle Lauriot-Prévost)
- For omnidirectional lighting with rectangular perforation grid
- Color: COAL (RAL 7021)
- Grid with COAL finishing
- Housing: Co-extruded polycarbonate/PMMA for inside/outside use
- End caps & fixing straps: stainless steel 304L painted COAL (RAL 7021)
- Coal-coloured (RAL 7021) painted aluminium grid inserted between housing and an internal film in opalised white polycarbonate
- Stainless steel mounting plate attached to the alimentation end cap
- Gaskets: Gaskets moulded in EPDM



Light specifications and controlling

- 1 E27 11W max lamp, not included
- non dimmable



Installation and maintenance

- Diameter: 100 mm
- Total length: 355 mm
- Cable entry with nickel-coated brass cable gland for cable Ø 5 - 14 mm
- Connection to 3x2.5mm² automatic terminal block
- 2 reinforced stainless Steel fixing straps (with variable centre distance) and allowing 360° orientation
- Installation in vertical position, cable gland positioned downwards
- Maintenance by releasing the closing screw and extracting the diffuser



Characteristics

- Warranty : 5 years
- Operating temperature: -20 °C to +35 °C
- Protection: IP66/IP68/IP69K
- Resistance to IK shocks: IK10
- Electrical class: Class I
- Power supply: 220-240 V 50/60 Hz
- T°C with incandescent wires: 650°C
- Weight: 1,5 kg
- Designed and made in France

